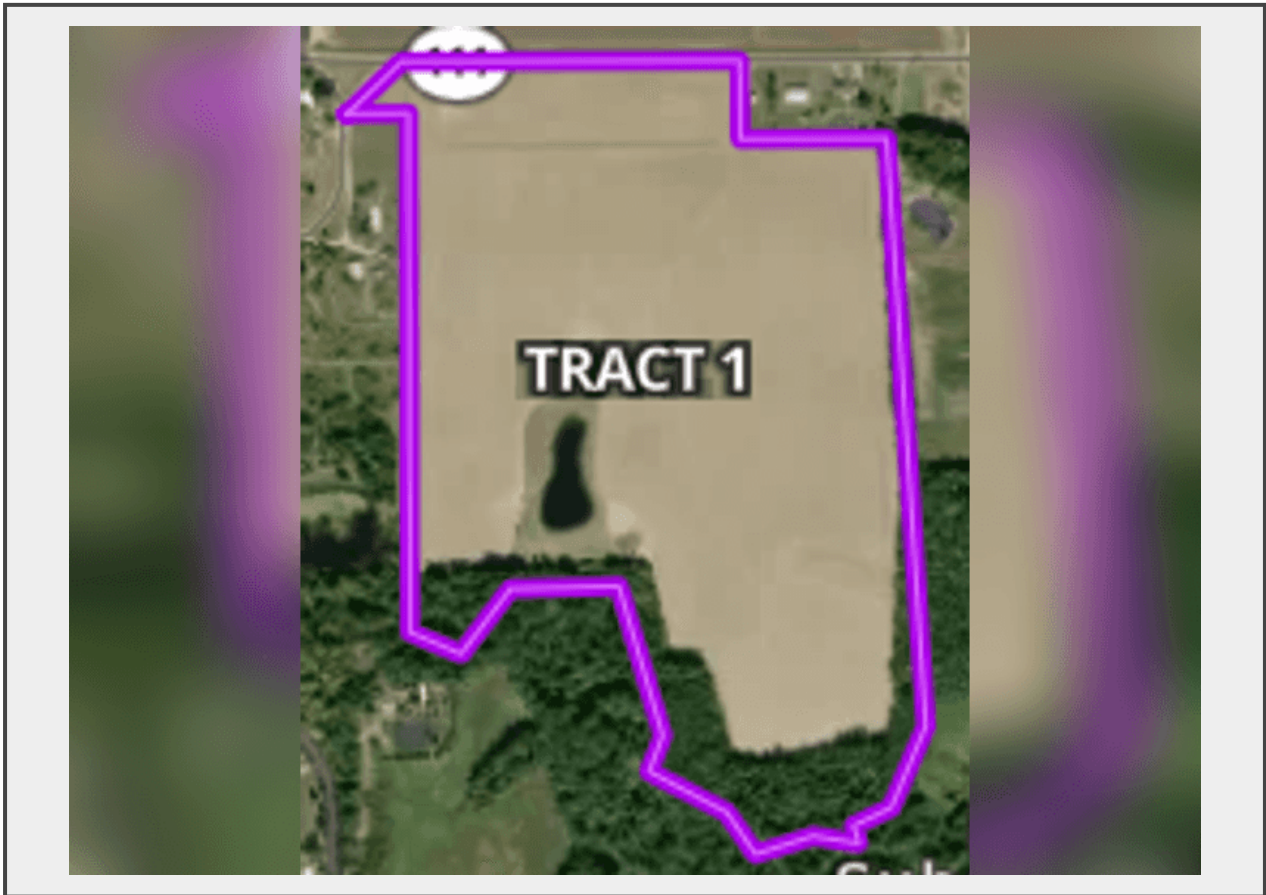


**Sale Name:** 300 +/- Acres, Paulding & Defiance Counties, Ohio

**LOT Tract 1 - Tract 1**



**Description**

Tract 1 consists of a total of approximately 58 acres, of which 51 are tillable. This tract has significant road frontage for great access and potential future building lots. It also has approximately 8 acres of wooded land that borders the Little Flat Rock Creek. Additionally, situated on Tract 1 is a 3/4-acre pond. This tract would make a great recreational, agricultural, and potential future building location for its new owner.

**Quantity:** 1



<https://auctions.dyerealestate.com/>